

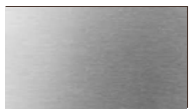
Maxim[®] ATC

Locks

The Maxim[®] ATC[™] is a mechanism that compliments the Maxim locking system. ATC is the Around The Corner device which cleverly pulls in the top rail of casement and the bottom rail of awning windows sequentially with the locking stile. Optimizing sash and frame engagement with additional locking points the ATC helps improve air, water, and structural window performance.



AVAILABLE COLORS



Stainless
Steel



PRODUCT HIGHLIGHTS

- Provides additional locking points for larger or high-performance windows
- Additional lock points improve air, water, structural performance depending on window system design
- 90-degree, self-locating housing design
- Easily adaptable to casement and awning windows as it is designed for both Maxim MP and MX tie bars
- With high strength plastic housing and stainless steel components a single system can be applied in all applications to limit SKU amount